

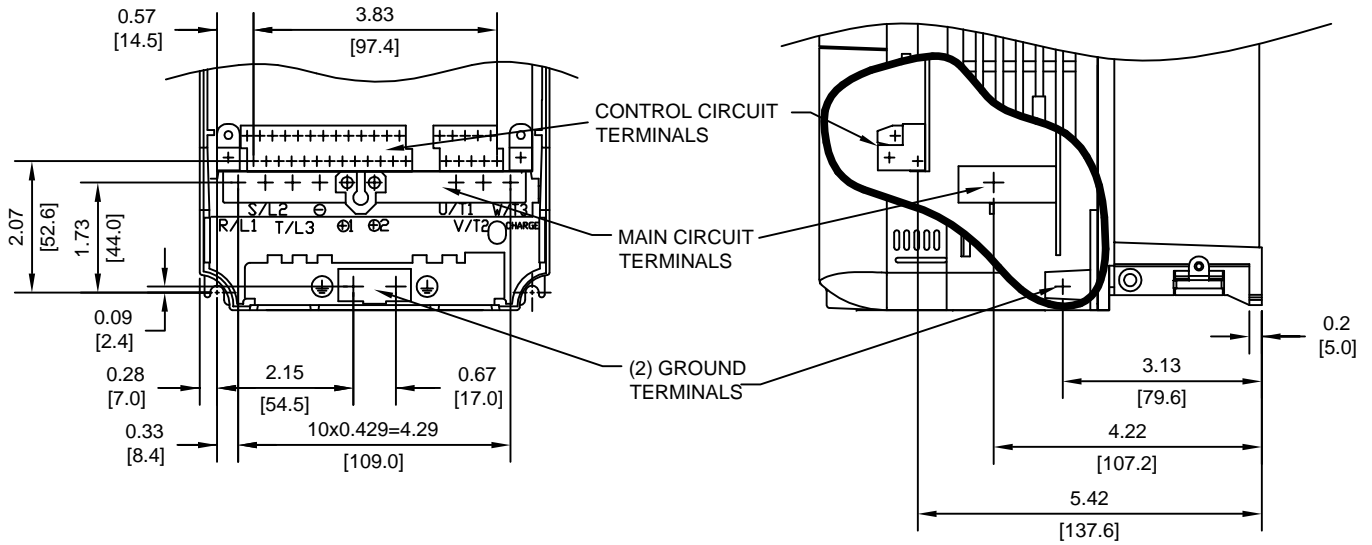
MODEL #	VOLTAGE (VAC)	OUTPUT CURRENT (A)	WEIGHT LBS (Kg)	HEAT LOSS (W)		
				INT	EXT	TOTAL
23P7	208/240	16.8	8.8 (4.0)	74	110	184
25P5		23.0	8.8 (4.0)	84	164	248
42P2	480	5.3	8.8 (4.0)	56	59	115
43P7		7.6	8.8 (4.0)	68	80	149
44P0		8.7	8.8 (4.0)	70	90	160
45P5		12.5	8.8 (4.0)	82	127	209

INT=INTERNAL COMPONENTS  
 EXT=EXTERNAL HEATSINK

FOR ADDITIONAL DETAILS AND SPECIFICATIONS, CONSULT MANUAL

TOLERANCES/REFERENCES: -	<p><b>YASKAWA</b> A World of Automation Solutions™</p> <p>YASKAWA ELECTRIC AMERICA, INC. Corporate Headquarters 2121 Norman Drive South Waukegan, IL 60085 1-800-YASKAWA http://www.yaskawa.com</p>	DRAWN: J. MATTAS	DATE 4-4-05	TITLE: E7 DIMENSION DRAWING
		CHECKED: M. RUCINSKI	DATE 5-3-05	FRAME SIZE 2
UNITS: IN[mm]	SCALE: 1:4	TECH: J. CAIRO	DATE 4-7-05	E7U23P7 TO 25P5, 42P2 TO 45P5
		APPROVED: T. SASADA	DATE 6-8-05	SIZE A
		ORIGINAL DESIGN: -	DATE -	REVISION R00
				PAGE 1 of 3
				DRAWING # <b>DD.E7.FR2.N1.01</b>

TERMINAL AND WIRING DETAILS (SCALE 1:3)



TERMINAL AND WIRE SPECIFICATIONS FOR MAIN CIRCUIT AND GROUND

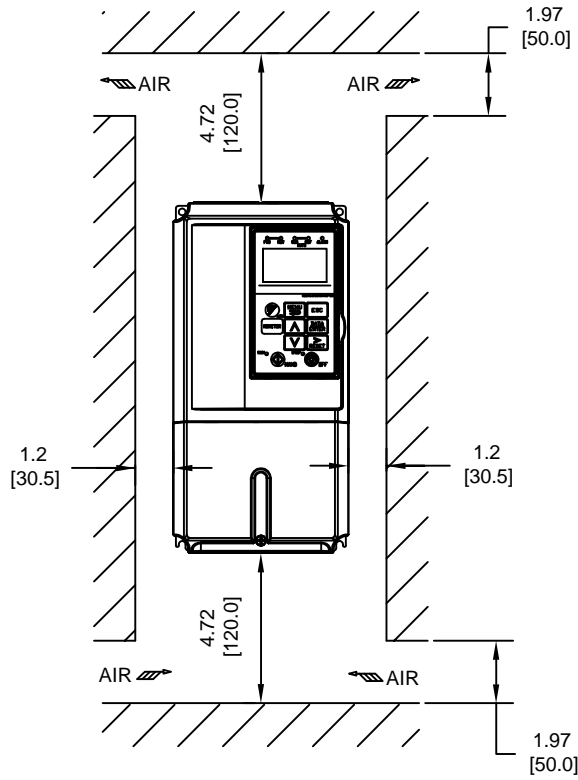
MODEL # CIMR-E7U	TERMINAL SYMBOL	TERMINAL SCREW	CLAMPING TORQUE lb.in.(N.m.)	WIRE RANGE AWG(mm <sup>2</sup> )
23P7	R/L1, S/L2, T/L3, ⊖, ⊕1, ⊕2, U/T1, V/T2, W/T3, ⊕	M4	10.6 TO 13.2 (1.2 TO 1.5)	18-10 (0.82-5.5)
25P5	R/L1, S/L2, T/L3, ⊖, ⊕1, ⊕2, U/T1, V/T2, W/T3, ⊕	M4	10.6 TO 13.2 (1.2 TO 1.5)	18-10 (0.82-5.5)
42P2	R/L1, S/L2, T/L3, ⊖, ⊕1, ⊕2, U/T1, V/T2, W/T3, ⊕	M4	10.6 TO 13.2 (1.2 TO 1.5)	18-10 (0.82-5.5)
43P7	R/L1, S/L2, T/L3, ⊖, ⊕1, ⊕2, U/T1, V/T2, W/T3, ⊕	M4	10.6 TO 13.2 (1.2 TO 1.5)	18-10 (0.82-5.5)
44P0	R/L1, S/L2, T/L3, ⊖, ⊕1, ⊕2, U/T1, V/T2, W/T3, ⊕	M4	10.6 TO 13.2 (1.2 TO 1.5)	18-10 (0.82-5.5)
45P5	R/L1, S/L2, T/L3, ⊖, ⊕1, ⊕2, U/T1, V/T2, W/T3, ⊕	M4	10.6 TO 13.2 (1.2 TO 1.5)	18-10 (0.82-5.5)

NOTE: REFER TO APPLICABLE CODES FOR PROPER WIRE TYPE AND SIZE

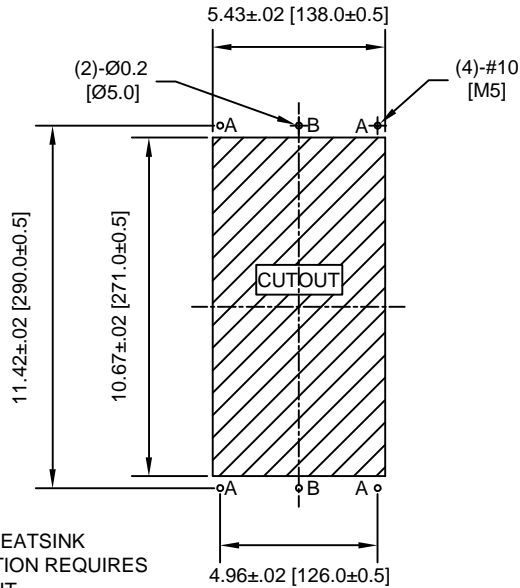
FOR ADDITIONAL DETAILS AND SPECIFICATIONS, CONSULT MANUAL

TOLERANCES/REFERENCES: -		<p><b>YASKAWA</b> A World of Automation Solutions™</p> <p><b>YASKAWA ELECTRIC AMERICA, INC.</b> Corporate Headquarters 2121 Norman Drive South Waukegan, IL 60085 1-800-YASKAWA http://www.yaskawa.com</p>	DRAWN: J. MATTAS DATE 4-4-05	TITLE: E7 DIMENSION DRAWING FRAME SIZE 2 NEMA TYPE 1/IP20 AND IP00 E7U23P7 TO 25P5, 42P2 TO 45P5		
UNITS: IN[mm]			CHECKED: M. RUCINSKI DATE 5-3-05	TECH: J. CAIRO DATE 4-7-05	SIZE A	REVISION R00
SCALE: BY VIEW		APPROVED: T. SASADA DATE 6-6-05	ORIGINAL DESIGN: -	DRAWING #: DD.E7.FR2.N1.01		

**MINIMUM INSTALLATION CLEARANCES (SCALE 1:6)**



**PANEL CUTOUT FOR EXTERNAL HEATSINK MOUNTING CONFIGURATION (SCALE 1:6)**



- NOTES:**
- EXTERNAL HEATSINK CONFIGURATION REQUIRES MOUNTING KIT
  - EXPOSED HEATSINK DEPTH D=2.32" MINUS PANEL THICKNESS

FOR ADDITIONAL DETAILS AND SPECIFICATIONS, CONSULT MANUAL

TOLERANCES/REFERENCES: -		<p><b>YASKAWA</b> A World of Automation Solutions™</p> <p><b>YASKAWA ELECTRIC AMERICA, INC.</b> Corporate Headquarters 2121 Norman Drive South Waukegan, IL 60085 1-800-YASKAWA http://www.yaskawa.com</p>	DRAWN: J. MATTAS DATE 4-4-05	TITLE: E7 DIMENSION DRAWING FRAME SIZE 2 NEMA TYPE 1/IP20 AND IP00 E7U23P7 TO 25P5, 42P2 TO 45P5
UNITS: IN[mm]	SCALE: BY VIEW		CHECKED: M. RUCINSKI DATE 5-3-05	TECH: J. CAIRO DATE 4-7-05
		APPROVED: T. SASADA DATE 6-8-05	SIZE A	REVISION R00
		ORIGINAL DESIGN: -	DATE -	PAGE 3 of 3
		DRAWING #: <b>DD.E7.FR2.N1.01</b>		